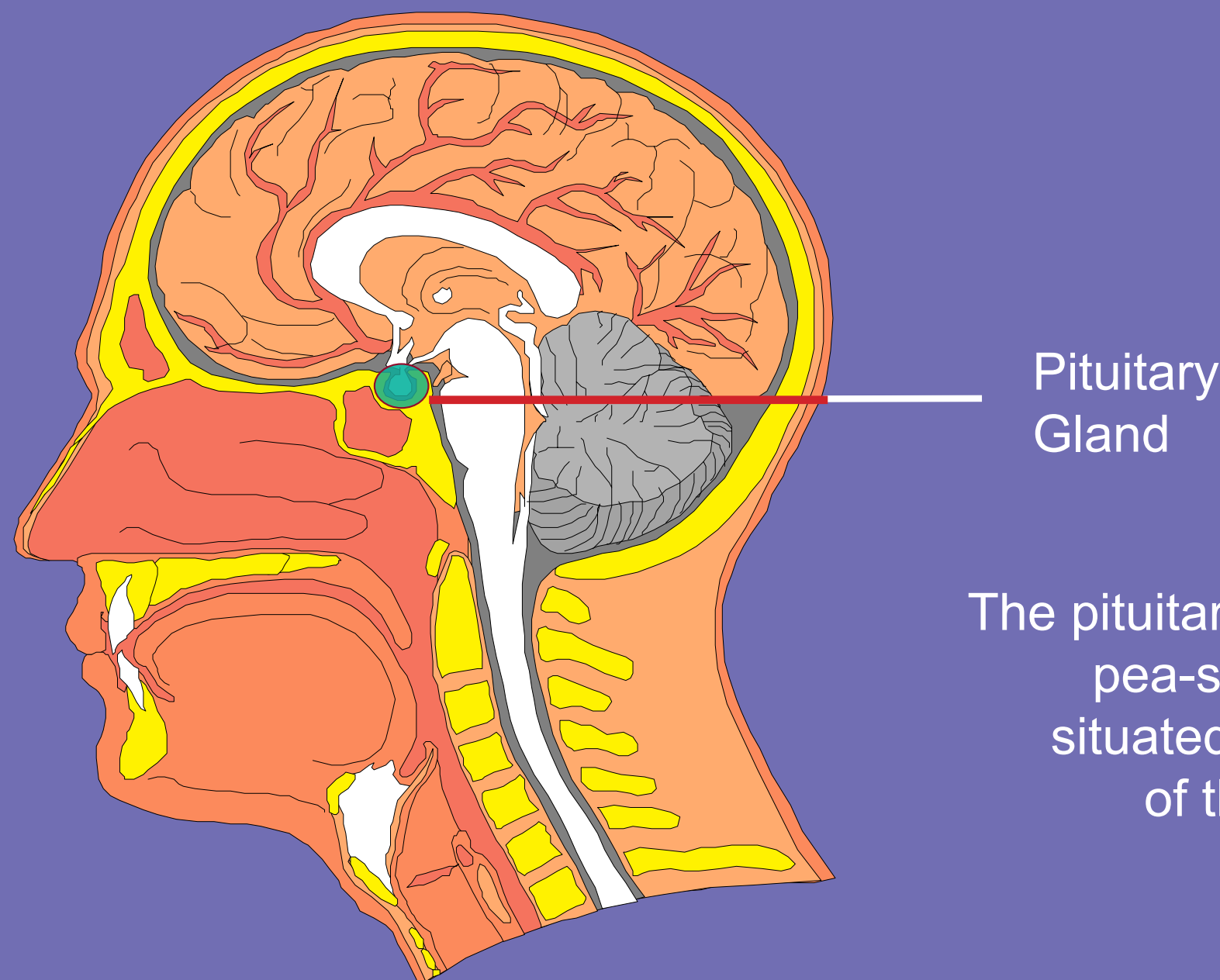


What is the Pituitary Gland?

The pituitary gland is described as the “master gland” because it makes hormones that send messages to other glands to control your metabolism, growth, sexual maturity, reproduction, energy levels and general well-being.



The pituitary is a soft, oval, pea-sized gland situated in the base of the skull.

The pituitary gland controls many aspects of the endocrine system by sending messages to other glands to make more or less hormones.

THE PITUITARY AND ITS TARGET GLANDS

Thyroid Gland

- controls your metabolism (the speed your body works)

Adrenal Glands

- control salt balance and stress response

Ovaries and Testes

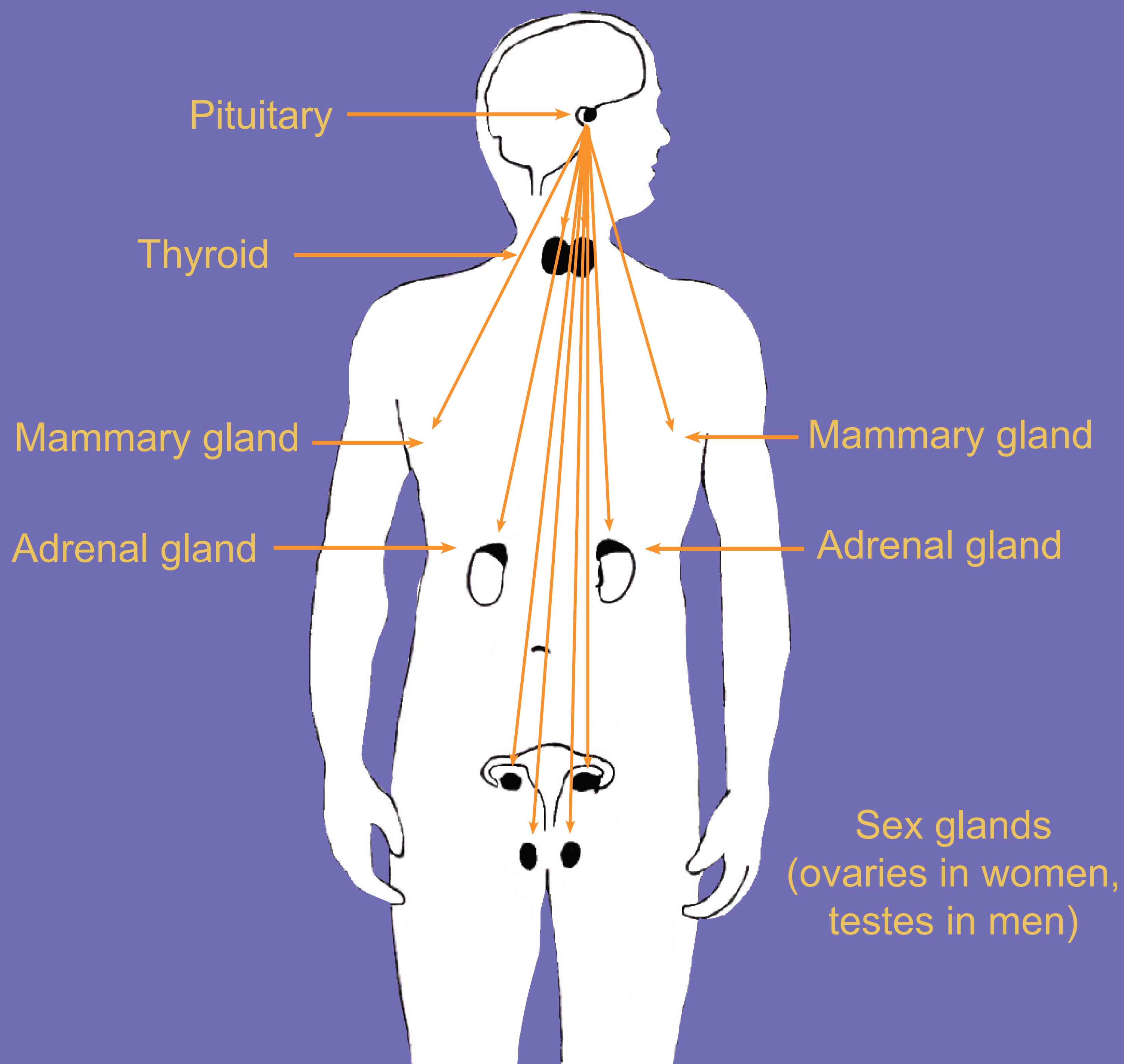
- control sex hormones and thus fertility

Mammary Glands

- control production of breast milk

Multi-systems

- affect growth and metabolism
- regulate water retention and urine production



Ref: L. Taylor, (1996) Understanding Your Pituitary Problems. Gore & Osment;p12